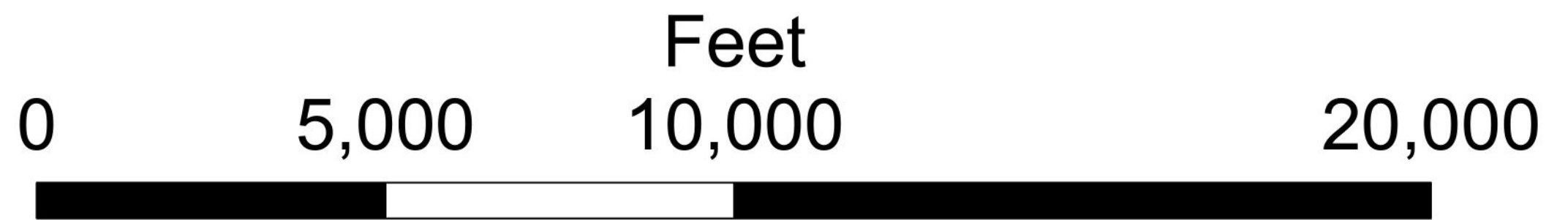
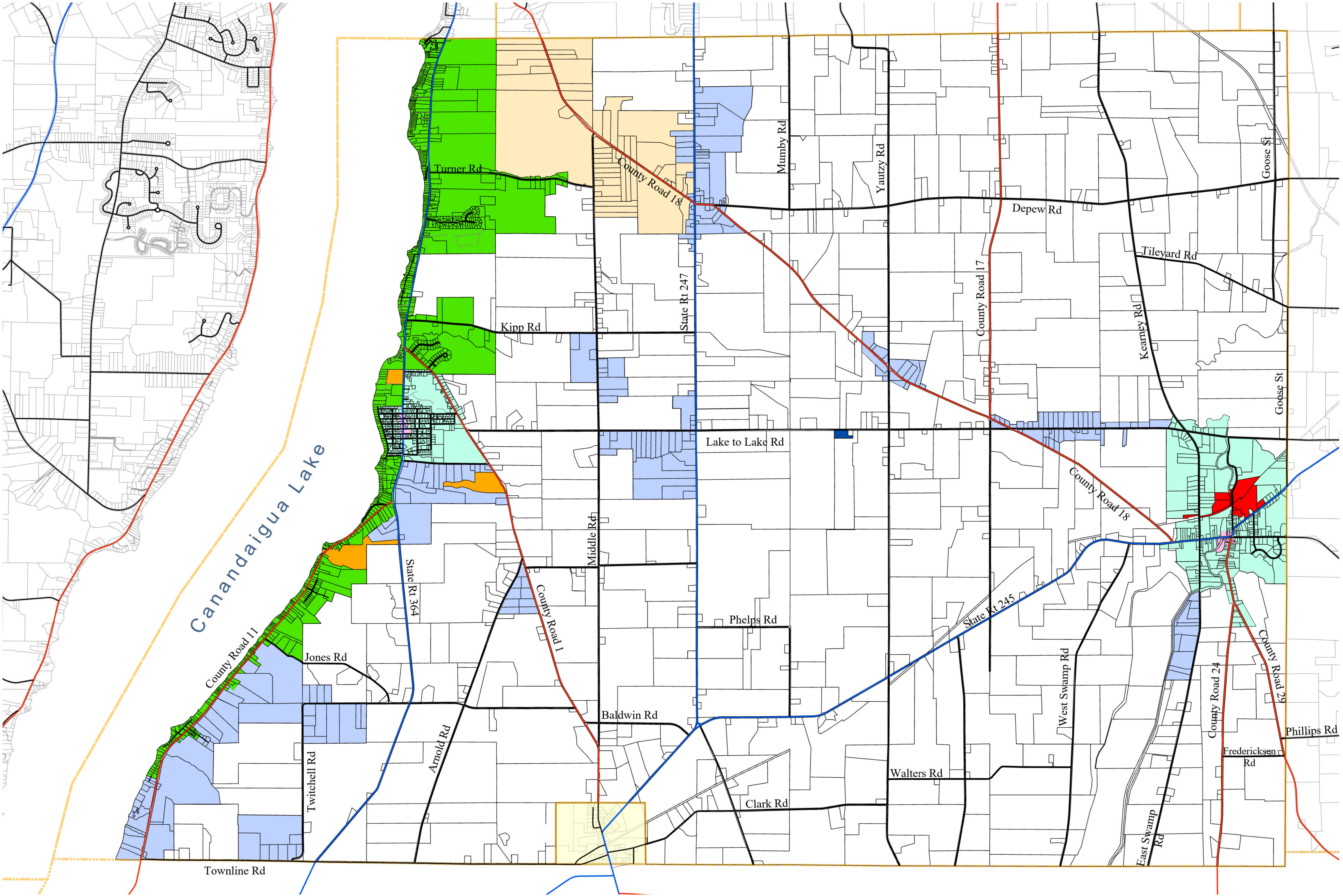


# Official Zoning Map The Town of Gorham

Effective September 2024

Adoption of New Official Zoning Map (See Local Law 1-2024) on 9/4/2024

- Legend**
- State or US Routes
  - County Roads
  - Municipal Roads
  - Private Drives
  - Village of Rushville
  - Town Boundary
  - Parcels in Gorham
  - Parcels outside Gorham
- Zoning Districts**
- FP - FARMING PREFERRED/FARMLAND PRIORITY
  - GB - GENERAL BUSINESS
  - HC - HAMLET COMMERCIAL
  - HR - HAMLET RESIDENTIAL
  - I - INDUSTRIAL
  - PD - PLANNED DEVELOPMENT
  - PRD - PLANNED RESIDENTIAL DEVELOPMENT
  - RR - RURAL RESIDENTIAL
  - R-1 - RESIDENTIAL



Source of Digital Tax Parcel Data: Copyright 2024 County of Ontario, Real Property Tax Department, All Rights Reserved, used by permission  
 Source of Digital Zoning Data: Copyright 2024, County of Ontario, Planning Department, All Rights Reserved, used by permission



# Official Zoning Map The Town of Gorham

Effective September 2024

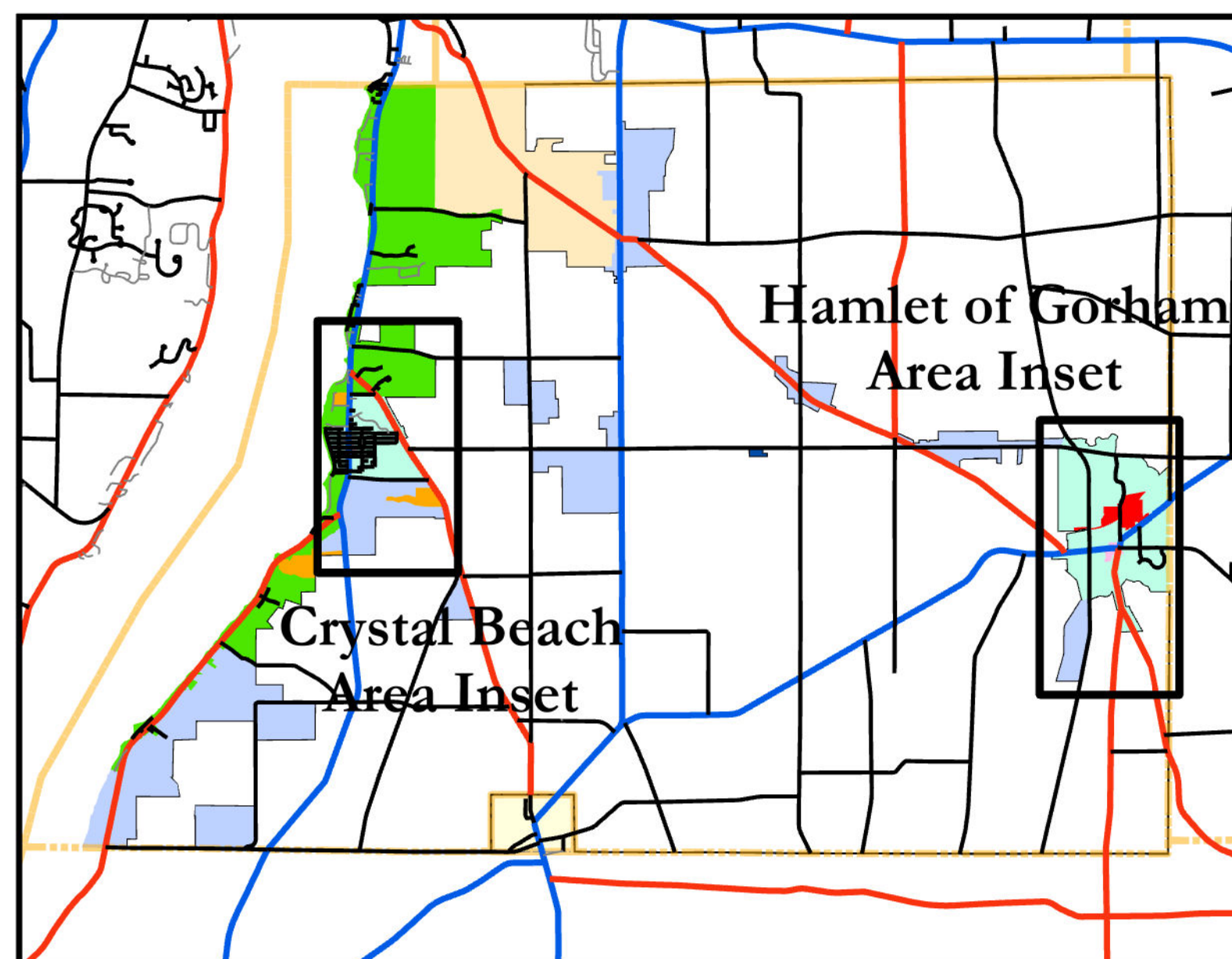
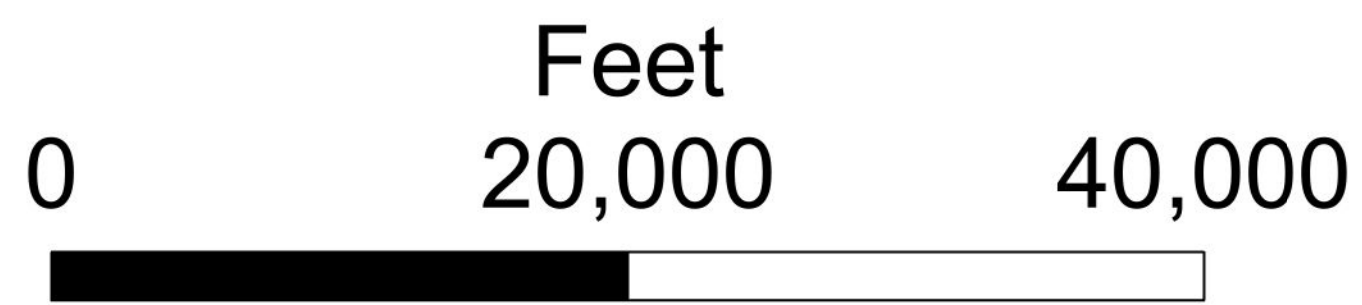
Adoption of New Official Zoning Map (See Local Law 1-2024)  
on 9/4/2024

## Legend

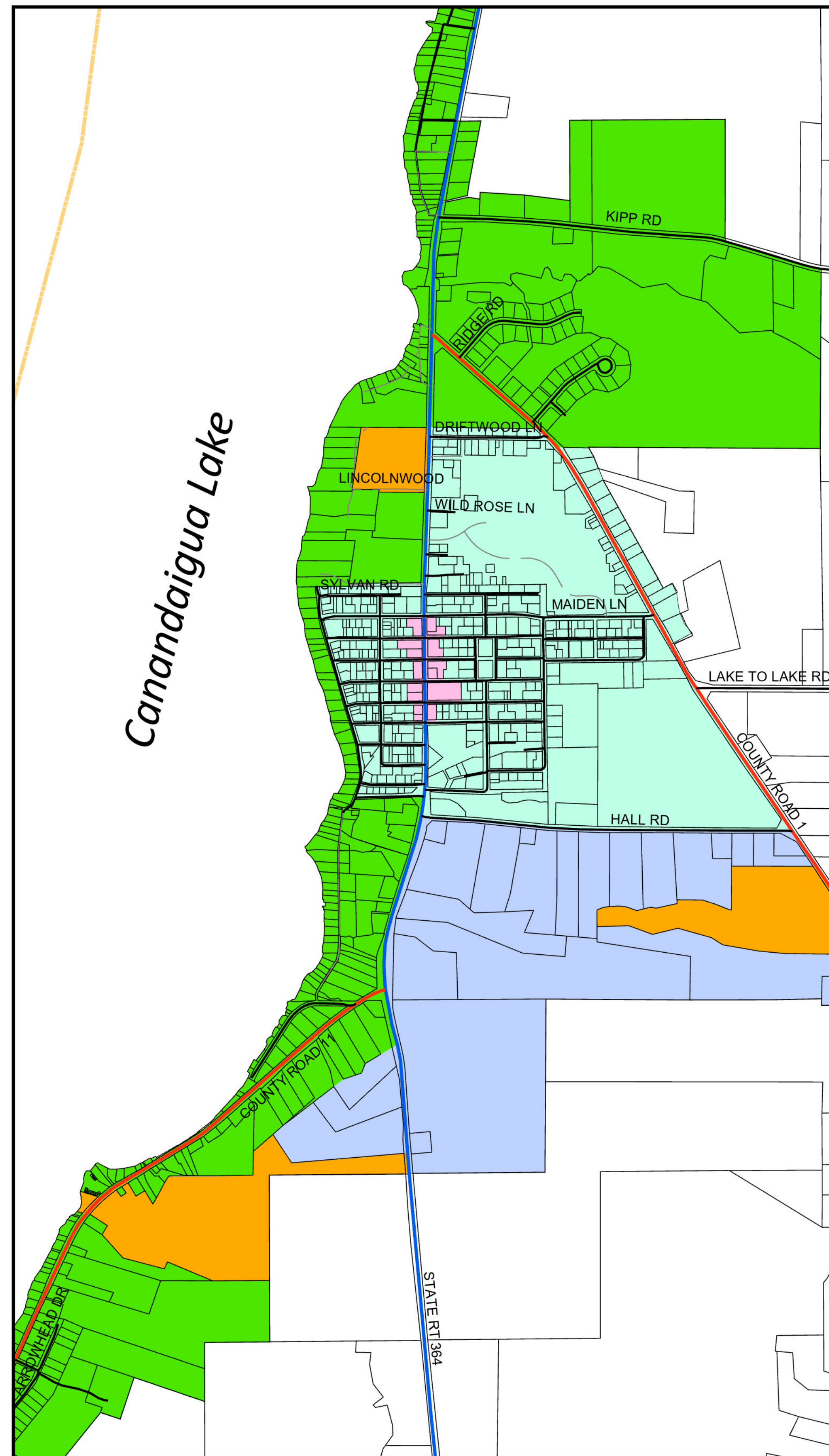
- State or US Routes
- County Roads
- Municipal Roads
- Private Drives
- Village of Rushville
- Town Boundary

## Zoning Districts

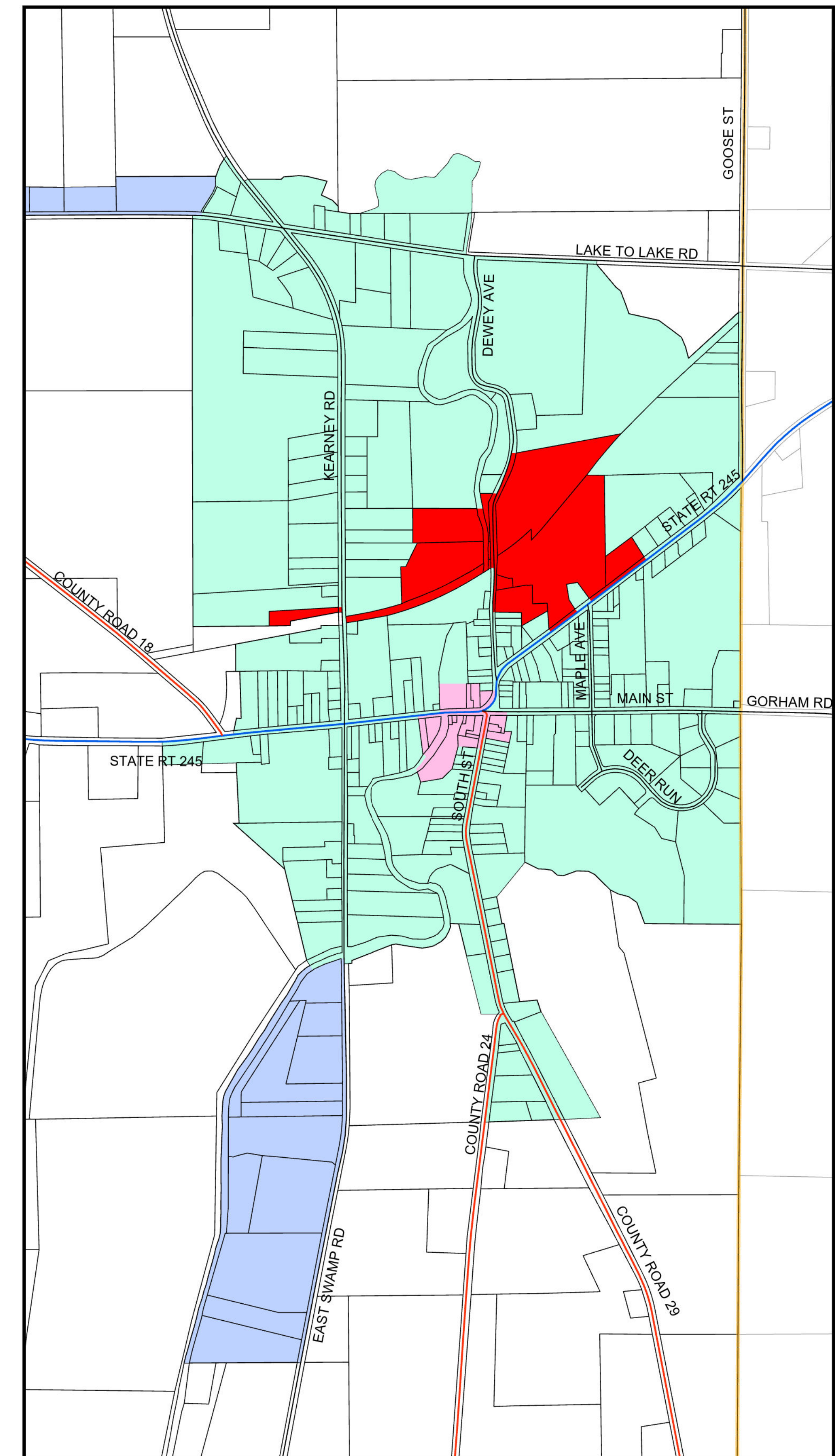
- FP - FARMING PREFERRED/FARMLAND PRIORITY
- GB - GENERAL BUSINESS
- HC - HAMLET COMMERCIAL
- HR - HAMLET RESIDENTIAL
- I - INDUSTRIAL
- PD - PLANNED DEVELOPMENT
- PRD - PLANNED RESIDENTIAL DEVELOPMENT
- RR - RURAL RESIDENTIAL
- R-1 - RESIDENTIAL



## Crystal Beach Area Zoning Inset



## Hamlet of Gorham Area Zoning Inset





# Overlay Districts

## The Town of Gorham

Effective September 2024

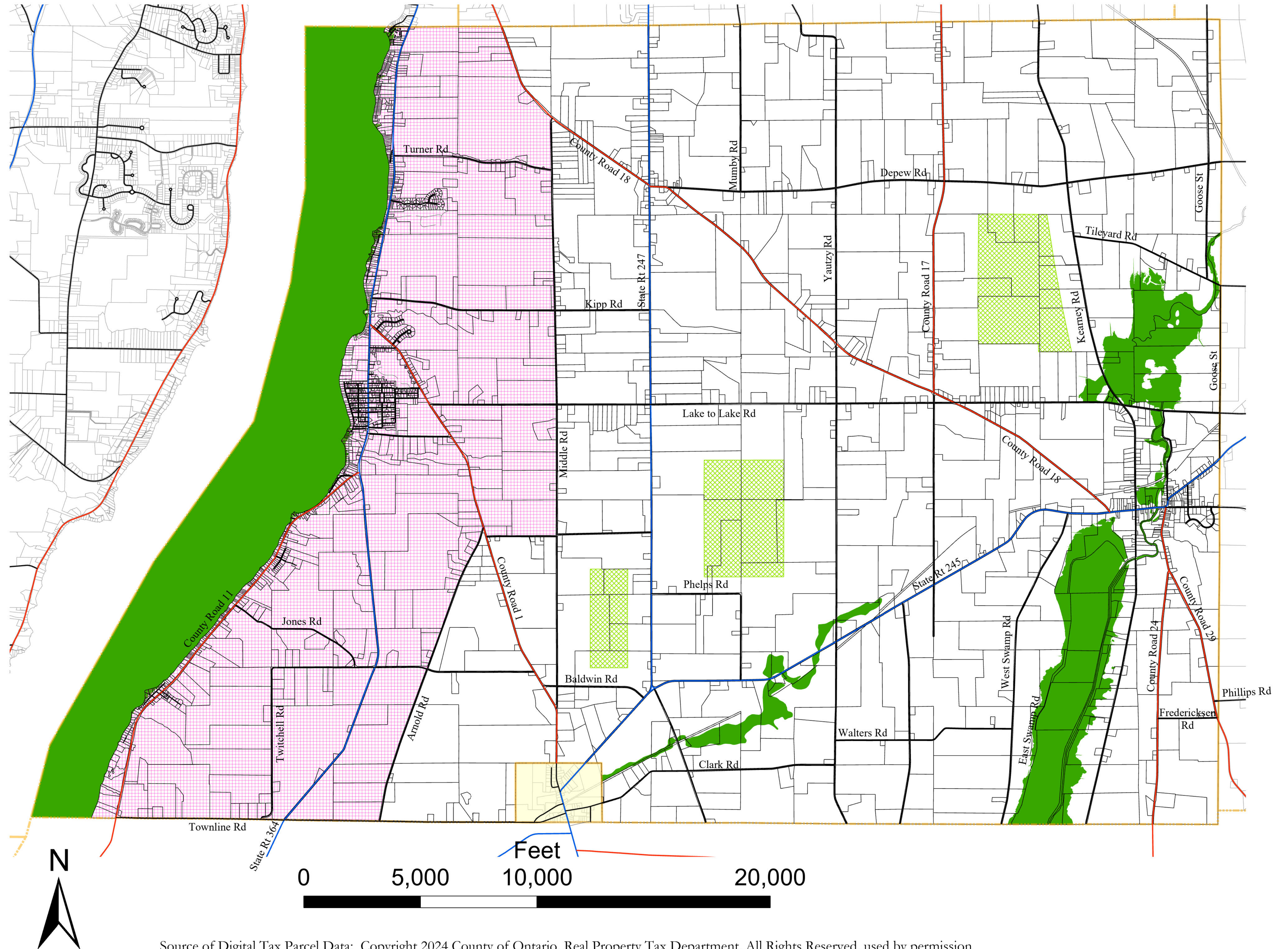
Adoption of New Official Zoning Map (See Local Law 1-2024) on 9/4/2024

Map 3 of 3

FPO updated 12/4/2023 using 1978 FEMA Flood Hazard Map Flood Elevations and 2019 LiDAR from Ontario County. Final Location subject to determination by a Professional Engineer or Land Surveyor, or by determination of FEMA.

### Legend

- State or US Routes
- County Roads
- Municipal Roads
- Private Drives
- Village of Rushville
- Town Boundary
- Parcels in Gorham
- Parcels outside Gorham
- FPO-Flood Plain Overlay District
- TOD - Telecommunications Overlay District
- LDO - Limited Development Overlay District



Source of Digital Tax Parcel Data: Copyright 2024 County of Ontario, Real Property Tax Department, All Rights Reserved, used by permission  
 Source of Digital Zoning Data: Copyright 2024, County of Ontario, Planning Department, All Rights Reserved, used by permission